

DUALGO^{plus}

STATIONÄR FILTER ENHET MED TVÅ SLANG ARMAR

DualGo^{plus} är ett stationärt filter för svetsrök med integrerad fläkt och två slangarmar (EconomyArm). Den innehåller ett engångs filterpaket.

DualGo^{plus} är anpassad för sporadisk svetsning (ca en spole av fast tråd eller 7,5 kg / 16,5 lbs av elektroder per månad) och TIG svetsning.



APPLIKATIONER

DualGo^{plus} är avsedd att användas för följande applikationer:

- MIG-MAG/GMAW svetsning
- TIG svetsning
- FCAW svetsning
- stick/MMAW svetsning
- slipning
- polering
- efterbehandling



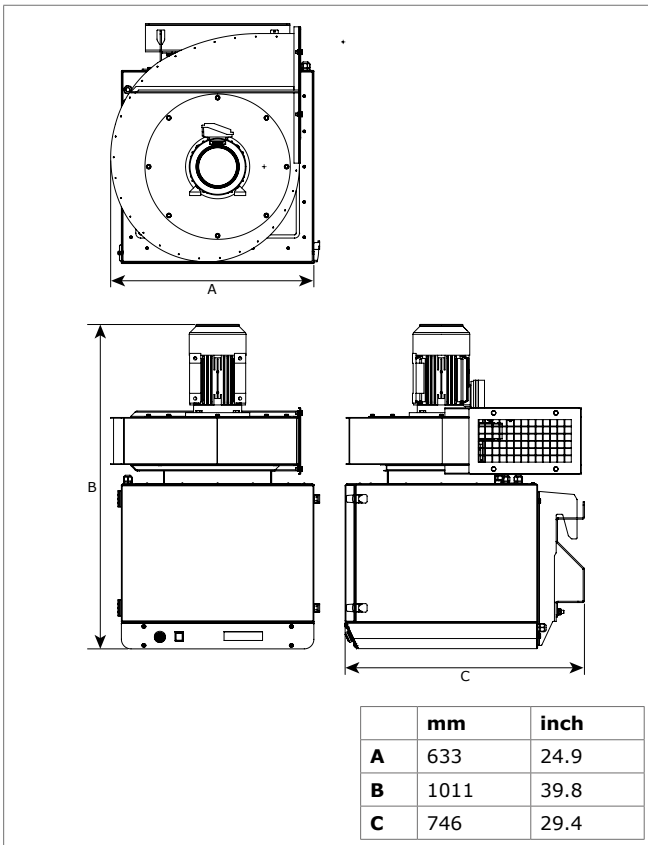
TEKNISK DATA

■ Dimensioner och egenskaper	
Material (hölje):	elektro förzinkat stål (enligt DIN EN 10152)
• stålgrad	• DC01+ZE
• stålgrad nr.	• 1.0330
Färg	gul RAL 1004 grå RAL 7011
Vikt (net), utan arm	
Matningskabel:	ingår ej
■ Utsugsarm arm	
Typ	KUA
Material	metall rör
Längd:	
• KUA-2	• 2 m
• KUA-3	• 3 m
• KUA-4	• 4 m
Vikt:	
• KUA-2	• 12 kg (26.5 lbs)
• KUA-3	• 15.5 kg (34.2 lbs)
• KUA-4	• 18 kg (39.7 lbs)
■ Filter	
Förfilter kassett:	
• material	• polyester
• filteryta	• 1 m ² (10.8 ft ²)
• filterklass	• G2 enligt EN 779
• tvättbart	• nej
HEPA filter kassett:	
• material	• glasfiber
• filteryta	• 26 m ² (280 ft ²)
• filterklass	• HEPA E12 enligt EN1822:2009
• tvättbart	• nej
■ YHVVUNLODVM	
W3	enligt ISO 15012-1: 2013

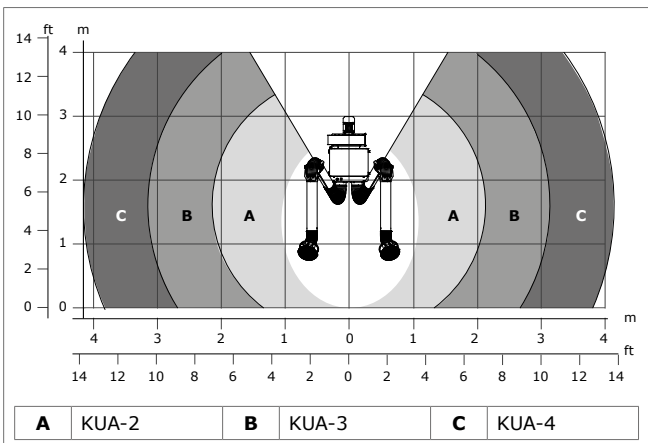
■ Performance	
Fan type	radial
Extraction capacity (incl. extraction arms)	max. 1700 m ³ /h (1000 CFM)
Fan speed	2800 rpm
Noise level (according to ISO 3746)	• 79 dB(A)
• with silencer SAS-315	• 70 dB(A)
■ Electrical data	
Power consumption	2,2 kW (3 HP)
Available connection voltages	• 400V/3ph/50Hz (435)
	• 208-230/460V/3ph/60Hz (536)
	• 575V/3ph/60Hz (636)
Motor design	NEMA
Energy efficiency	IE3 / premium
■ Ambient and process conditions	
Process temperature:	
• min.	• 5°C (41°F)
• nom.	• 20°C (68°F)
• max.	• 70°C (158°F)
Max. relative humidity	90%
Suitable for outdoor use	no
Storage conditions	• 5-45°C (41-113°F)
	• relative humidity max. 80%
■ Scope of supply	
Stationary filter unit, incl. fan and wall bracket – Extraction arm (pre-assembled) – Rotating flange – Arm swivel ring, incl. rubber collar – Extraction hood – Hood collar with safety mesh – Mounting material – Switch box	
■ Order information	
Article no.:	DualGo:
• 0000111465	• DualGoPlus/2+2m (435)
• 0000111466	• DualGoPlus/2+2m (536)
• 0000111467	• DualGoPlus/2+2m (636)
• 0000111485	• DualGoPlus/3+3m (435)
• 0000111486	• DualGoPlus/3+3m (536)
• 0000111487	• DualGoPlus/3+3m (636)
• 0000111497	• DualGoPlus/4+4m (435)
• 0000111498	• DualGoPlus/4+4m (536)
• 0000111499	• DualGoPlus/4+4m (636)

<ul style="list-style-type: none"> • 0000111503 • 0000111504 • 0000111505 • 0000111509 • 0000111510 • 0000111511 • 0000111515 • 0000111516 • 0000111517 	<ul style="list-style-type: none"> • DualGoplus/2+3m (435) • DualGoplus/2+3m (536) • DualGoplus/2+3m (636) • DualGoplus/2+4m (435) • DualGoplus/2+4m (536) • DualGoplus/2+4m (636) • DualGoplus/3+4m (435) • DualGoplus/3+4m (536) • DualGoplus/3+4m (636)
Number/package	1
Shipping data	
Gross weight (incl. pallet)	
Packing dimensions (incl. pallet)	
Max. number/pallet	
Harmonized Tariff Code	8421.39.2090

DIMENSIONS



WORKING RANGE



FEATURES & BENEFITS



Compact design



Remote control



Service indicator (buzzer)

APPROVALS/CERTIFICATES



Directive 2011/65/EC (RoHS)
valid as of 8 June 2011

Application restrictions

Do **not** use the product for the following applications or in the following circumstances: polishing applications in combination with grinding, welding or any other application that generate sparks (fibres from polishing or abrasive flap disks are highly flammable and pose a high risk of filter fires when exposed to sparks) | aluminium laser cutting | oil mist | heavy oil mist in welding fume | arc-air gouging | extraction of aggressive fumes and gases (e.g. from acids, from alkaline, from soldering paste containing lithium) | extraction of hot gases (more than 70°C/158°F continuously) | grinding aluminum and magnesium | flame spraying | extraction of cement, saw dust, wood dust etc. | sucking cigarettes, cigars, oiled tissues and other burning particles, objects and acids | explosive environments or explosive substances/gases

Product type

DualGo^{plus}

Article no.

refer to Order information

Product category

stationary filter units

Version

060117/A

Always check the latest version on www.plymovent.com